

Punggol Cove Primary School

P1 Orientation

7 November 2025

2.30 p.m. – 4.30p.m.



To Serve To Lead





Welcome by Principal
Mrs Teo Whye Choo

A Warm Welcome to our Punggol Cove Primary Family!



To Serve To Lead



About Punggol Cove Pri...



Celebrating A Decade of Growth • Charting New Pathways to Excellence

- History of 10 years
- Co-educational School : Boys and Girls
- Student population of around 1570, staff strength of about 140 and 45 Classes in 2025
- Single Session School (7.30 am to 1.30 pm with recess and snack breaks)
- 12 CCAs and P3 Modular CCA (Tue and Thu : 2-4 pm)
- Mother Tongue Languages (CL, ML, TL)
- Student Care Centre (Vendor : Little Professors)



OFFICIAL (CLOSED) \ NON-SENSITIVE

To Serve To Lead



About PCPS...



Our Beliefs
Our Values
Our Mission
Our Vision
Our Learning Dispositions



OFFICIAL (CLOSED) \ NON-SENSITIVE

To Serve To Lead



Our Vision

Every PCPS student,
a Curious Lifelong
Learner, a Confident
Leader and a
Responsible
Innovator



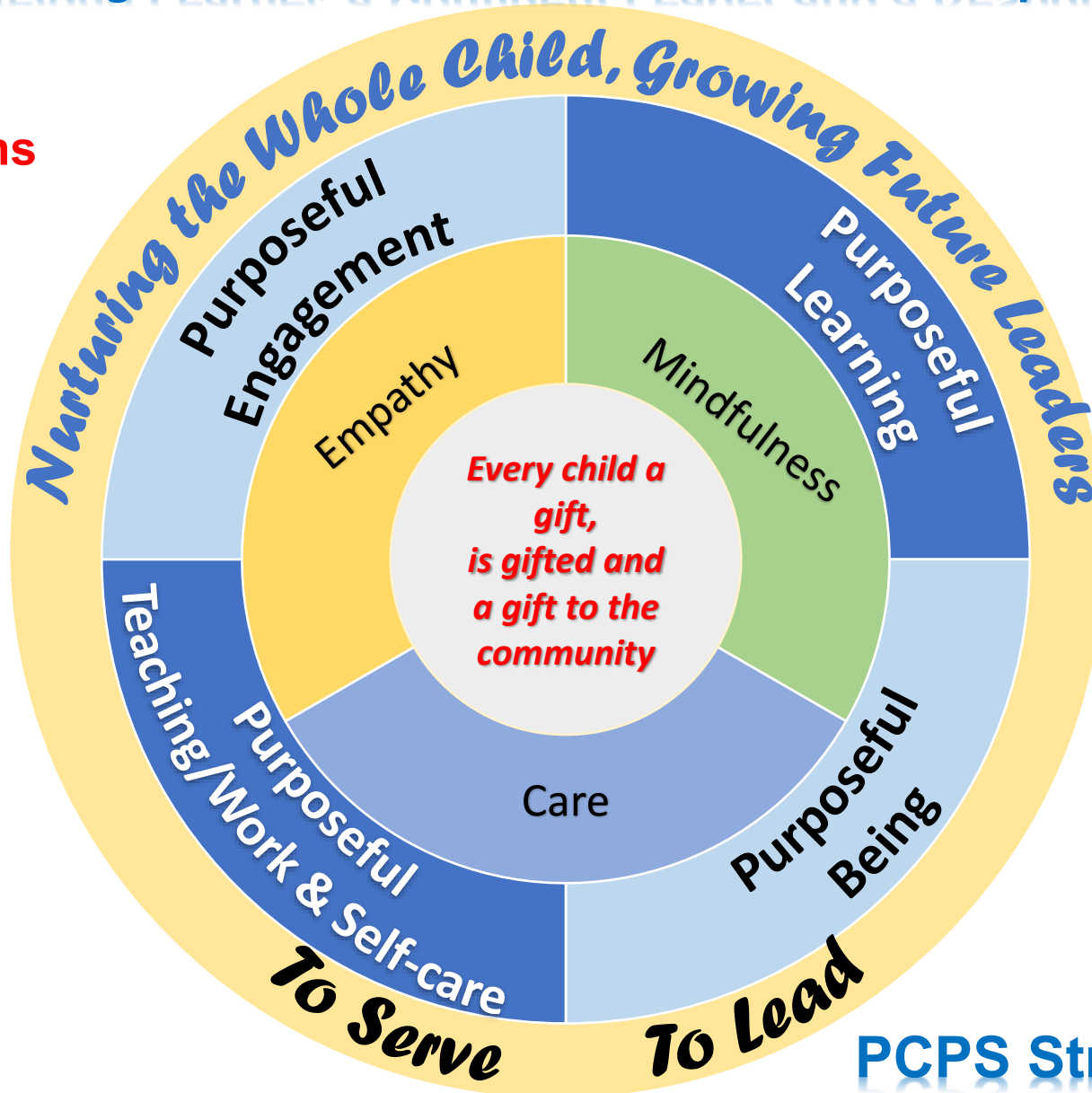
Our Belief Every child is a gift, is gifted and a gift to the community

Our Refreshed Vision : Every PCPS student,
a Curious Lifelong Learner, a Confident Leader and a Responsible Innovator

COR3
Dispositions

Curiosity

Open-mindedness



Reflectiveness

Responsibility

Resilience



PCPS Strategic 4P Framework

Learning and Growing in PCPS

- Ignite the curiosity and joy in learning
- Lay a strong foundation in literacy and numeracy
- Nurture are well-rounded individuals who are passionate lifelong learners
- Discover students' strengths and developing their potential
- Prepare students to be future-ready
- Learn and grow in a safe, happy and engaging learning environment to support their well-being

***A GOOD BALANCE OF
knowledge***

life skills



social skills



values and dispositions



Building Strong Foundations: Knowledge, Skills & Dispositions (KSDs) at the Start of P1

- The lower primary curriculum nurtures students' joy of learning, builds on pre-school foundations, and promotes dispositions and attitudes for lifelong learning.
- The following are professionally determined expectations on what most children should be equipped with at the start of P1. Our teachers will continue to build on these to strengthen our students' foundations and nurture active, curious learners.



Values, Social-Emotional Competencies, Citizenship Dispositions



Art



English Language



Mathematics



Mother Tongue Languages



Music



Physical Education

- | | | | | | | |
|---|---|---|--|--|--|--|
| <ul style="list-style-type: none"> • Develop understanding of self and manage own behaviours • Communicate, interact and build caring and respectful relationships with others • Take responsibility for own actions | <ul style="list-style-type: none"> • Enjoy Participating in Art • Express Ideas and Feelings through Art • Demonstrate Awareness of Art from Different Cultural Groups | <ul style="list-style-type: none"> • Listen and Speak for Enjoyment and Information • Read with Enjoyment and Understanding • Communicate Ideas and Information through Writing or Using Symbols or Letter-Like Shapes | <ul style="list-style-type: none"> • Basic Understanding of Numbers Up To 10 • Compare Quantities Between Two Groups of Objects within 10 • Recognise Simple Patterns | <ul style="list-style-type: none"> • Enjoy and Show an Interest in Learning Mother Tongue Language • Enjoy and Show an Interest in Listening and Speaking in Mother Tongue Language • Demonstrate Awareness of Local Ethnic Culture | <ul style="list-style-type: none"> • Enjoy Participating in Music and Movement Activities • Express Ideas and Feelings through Music and Movement Activities • Demonstrate Awareness of Music and Movement from Different Cultural Groups | <ul style="list-style-type: none"> • Enjoy Physical Activities • Display Coordination in Motor Tasks • Demonstrate Awareness of Healthy Habits and Safety |
|---|---|---|--|--|--|--|

To Serve To Lead



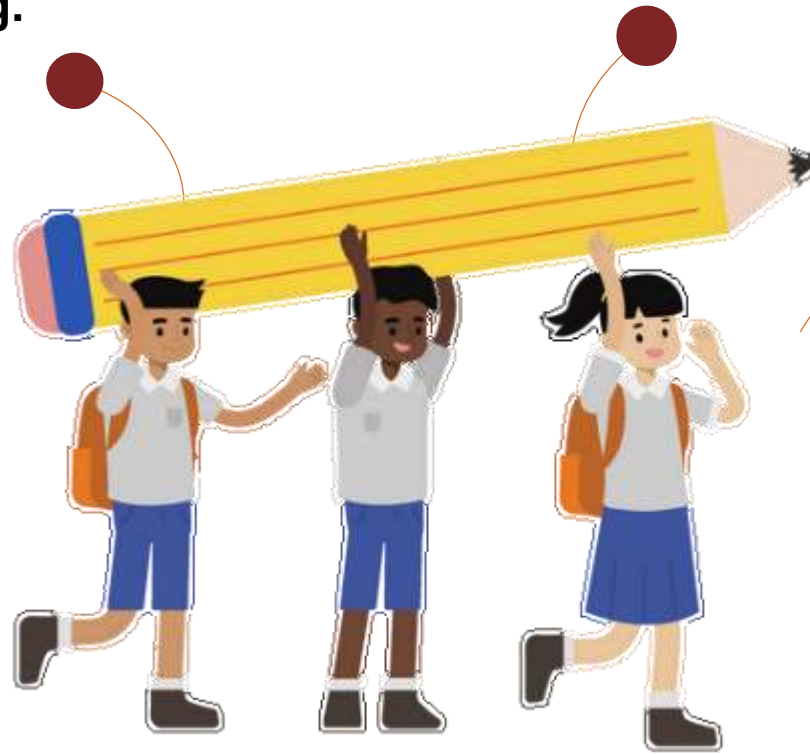
Building Strong Foundations: How is it achieved?

Play is an essential feature that taps students' inquisitiveness and ignites a self-sustaining passion for learning.

Differentiated support (LSP, LSM, TRANSIT) for children with differing learning needs

Teachers pace teaching and adopt **developmentally appropriate**, engaging pedagogies to deepen learning.

No examinations and weighted assessments at P1 and P2 to provide more time and space to settle into a formal school setting, build relationships and develop the necessary skills and attitudes towards learning.



Developing the child holistically includes:

Prioritising the development of soft skills, including values, social-emotional competencies and self-help skills

Focusing on building learning dispositions for Lifelong Learning, including curiosity, confidence and nurturing the joy of learning

Building strong foundations in literacy and numeracy

Strengthening 21st Century Competencies and Digital Literacy in an age-appropriate manner



Learning in school and at home



What is SLS?

Our national online learning portal with curriculum-aligned resources for students to learn at their own pace and collaboratively.

How and when will P1 students use SLS?

Students will learn with technology progressively, with light use at P1 [after Term 1] in an age-appropriate manner.

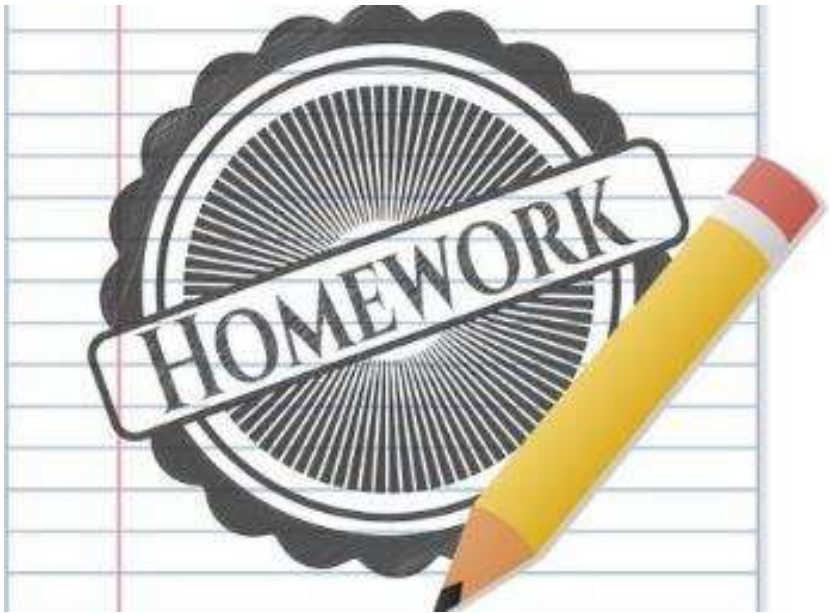
SLS homework are occasionally used to reinforce learning.



SLS onboarding information will be shared with parents via PG announcement by school.

- **Digital Tools** used by to support and complement classroom teaching and learning, e.g. Singapore Student Learning Space (SLS), ClassPoint, Kahoot, Padlet.

Learning in school and at home



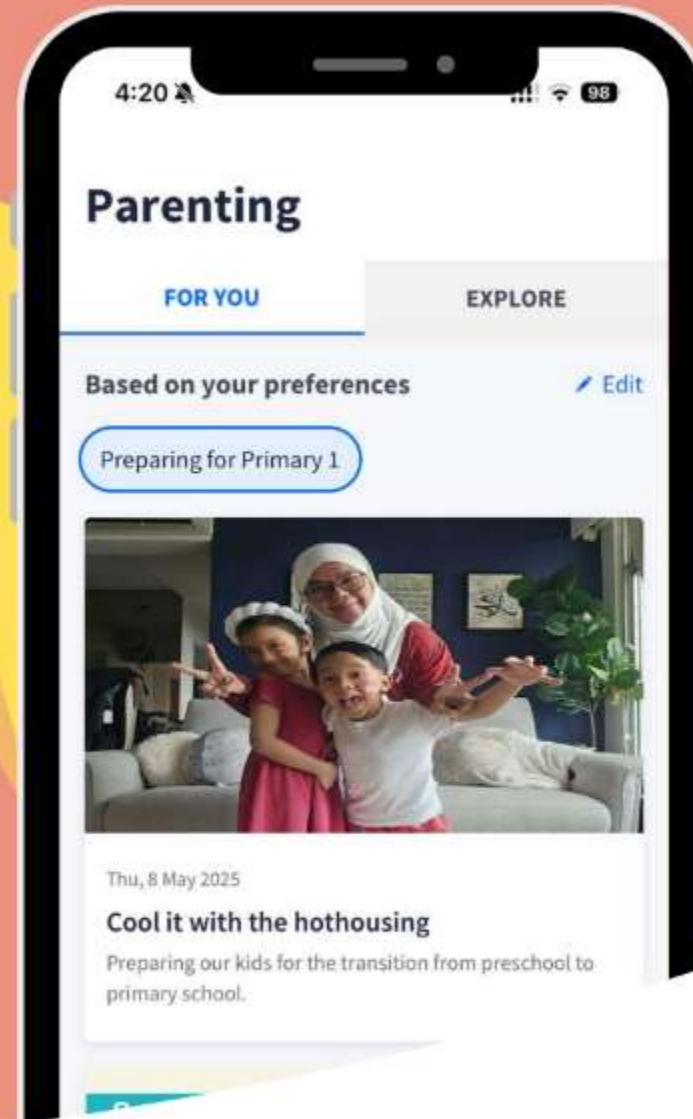
- **Homework Policy** is in place to guide parents on the extent of offline and occasional online homework that is given to the students.
- Homework helps teachers to assess students' understanding of their learning so that timely feedback can be given to support their learning.



Parenting Resources on Parents Gateway (PG)



Discover rich and customisable parenting resources on topics such as preparing for Primary 1, forging parent-child relationships and education pathways.





Begin your parenting journey with us

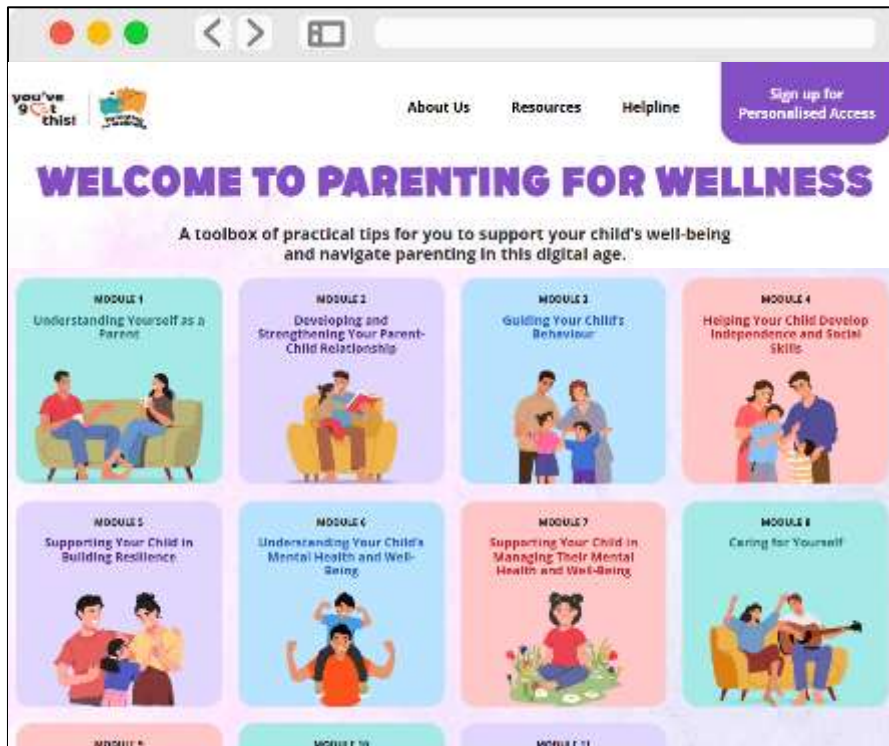
@parentingwith.moesg

Follow us on Instagram for bite-sized and actionable parenting tips to tackle the everyday demands of parenting.



Parenting for Wellness

An initiative to empower parents with key knowledge and skills to build strong parent-child relationships, strengthen their children's mental well-being and resilience, and parent effectively in the digital age.



The Toolbox for Parents **comprises bite-sized practical tips and strategies for parents**, such as ways to create a safe and nurturing home environment, build resilience in children, and stay safe online.

The **Website** offers **customised tips and resources tailored for individual parent**, including curated module recommendations, and allows you to easily track your parenting journey through a personalised dashboard.



See

SCHOOLBAG

CHECK US OUT!

PARTNERING YOU ON YOUR EDUCATION JOURNEY

New look, new features,
same good content

[Schoolbag.edu.sg](https://schoolbag.edu.sg)

Hear from fellow parents,
MOE educators and more.
Subscribe today!

go.gov.sg/schoolbag-subscribe



New MOH guidelines on screen use for children under 12



BELOW 18 MONTHS



- No screen use unless for interactive video chatting
- Do not leave screens on in the background when child is engaged in other activities

18 MONTHS TO 6 YEARS



- Limit screen use to less than an hour a day outside school
- Passive screen use not recommended
- View media together with children where possible
- Do not use screens to occupy or distract child
- Carefully choose age-appropriate educational content
- Do not leave screens on in the background
- No screens during meals and 1 hour before bedtime

7 TO 12 YEARS



- Limit screen use to less than 2 hours a day, unless related to schoolwork
- Develop a screen use plan or timetable
- Have regular conversations with children to find out their online activities
- Do not give children mobile devices with unrestricted access
- Use parental control settings to ensure children access age-appropriate content and apps
- Do not give children access to social media services
- No screens during meals and 1 hour before bedtime



Join Our Parent Support Group (PSG)

A team of dedicated parents supporting each other in nurturing their children. Network, share and learn with fellow parents by involving yourself in supporting and co-designing school programmes and events.



To Serve To Lead

Be an ACTIVE Parent Volunteer

- Consider joining the school's Parent Support Group (PSG) or volunteering at the school
- Create shared experiences with your child through supporting school programmes and events



Join the Parent Support Group (PSG) EXCO!

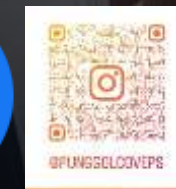
- Provide constructive feedback and suggestions to schools on programmes and practices through the various school's communication channels and platforms
- Assume leadership roles on PSG Executive Committee



The background of the entire slide is a photograph of a home-school partnership activity. It shows several young children in school uniforms sitting at a long table, working on a project. They are surrounded by adults, likely teachers or parents, who are assisting them. The children are focused on their work, and the adults are providing guidance. The setting appears to be a classroom or a dedicated workspace. The text is overlaid on this image in a large, white, sans-serif font.

**Let's look forward to a Great Start
to P1 and to building
a Win-Win Home-School
Partnership!**

See you on 2 January 2026, Friday for P1 Curriculum Briefing!



OFFICIAL (CLOSED) \ NON-SENSITIVE

Parents Briefing & Primary 1 Classroom Experience



To Serve To Lead



Notes to Parents

- Presentation slides will be uploaded onto the school website.
- FAQs and information on the start of school term will be sent via Parent Gateway before start of school.



What it is like in Primary 1?



To Serve To Lead



Holistic development for Primary 1 includes:

Prioritising the development of soft skills, including values, social-emotional competencies and self-help skills

- **FTGP**
- **PAL**
- **Student Well-Being Programmes (Cove Quest, Mindful Series and Wellness Fridays)**
- **Peer Supporters**

Building strong foundations in literacy and numeracy

- **English Stellar – Confident Speakers**
- **Math Play Pedagogy**

Focusing on building learning dispositions for Lifelong Learning, including curiosity, confidence and nurturing the joy of learning

- **COR3 Assemblies**
- **Sustainability Programmes**
- **Student Leadership Development (Class Committee)**

Strengthening 21st Century Competencies and Digital Literacy in an age-appropriate manner

- **New MICT**
- **Cyberwellness Efforts**



Primary 1 Highlights from 2025



To Serve To Lead



Supporting Your Child for Primary 1



To Serve To Lead



Supporting your child through the Primary 1 journey

**As our young ones develop at different pace, allowing
them to learn at their own pace helps them enjoy the
learning process.**



To Serve To Lead



Transition to Primary 1

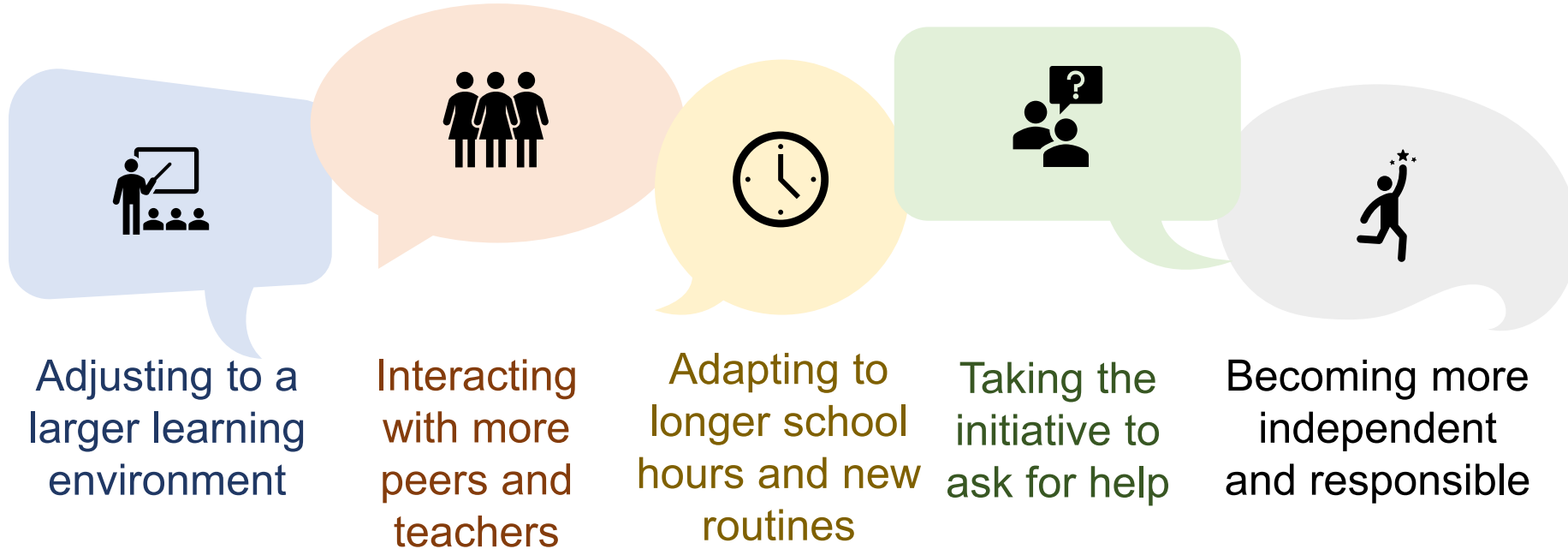
When your child enters primary school, their experience will include:



To Serve To Lead

How can you prepare your child for Primary 1?

You can start talking to your child about the following:



Try these conversation starters:

Mummy had an enjoyable day at work today. Let's share which was the most enjoyable part of our day.

Let's both remember someone that we met today who did a kind deed for us?

I learnt something new at work today. I am sure you did too. Can we teach each other what we learnt?

How else can you support your child?

Primary 1 is an exciting and fun stage for your child.
Help your child to enjoy the journey by developing these skills:



Nurture a love for reading
Sign your child up for a free Library membership and myLibrary ID to enjoy NLB's e-resources!

Developing Good Habits

Routines help your child build confidence and learn to manage things by themselves.



To Serve

Relating Well to Others

Build your child's interpersonal skills by:

01

Modelling the use of friendly and polite phrases

"Hi! My name is...What is your name?"

"Could you help me with..."

02

Providing opportunities for your child to share and take turns during playtime with other children

03

Modelling respectful interactions

"May I please..."

"It's okay if I can't join in..."

"I am sorry I ..."

MAKE NEW FRIENDS

What your child may learn in school

JOINING IN ACTIVITIES

1. Choose a good time.
2. Look at the person.
3. Ask in a friendly way, "Hi, may I join you?"
4. Accept the answer by saying "Thank you" or "Okay".



What you can do at home

SAY HELLO AND SMILE

Hi!

My name is ...!



Practice all steps with your child to help her/him relate with others and make friends easily. Encourage them to say hello, greet good morning and smile at their new friends and teachers. These greetings are a great way to connect with people.

Making friends will help your child to adapt quickly to the new school environment, as school becomes more enjoyable with their new friends. They can also learn and play well together.

Quick Info:

- The Programme for Active Learning (PAL) helps your child to discover his/her interests and how to relate and work with peers through Sports and Games, Outdoor Education, Performing Arts (Dance, Drama and Music) and Visual Arts.



Do a short role-play with your child to practise these steps for joining in activities:

- saying hello with a smile and introducing him/herself
- asking politely if he/she can join the group
- thanking them for choosing to include him/her
- saying and feeling okay even if they choose not to

Are you excited to meet your new friends? What do you do or say when you meet your new classmates or join them in group activities? Let's try it!

Explain how doing the above helps him/her to:

- make others feel comfortable
- prevent conflict with new classmates
- be confident

Read more: <https://www.schoolbag.sg/story/how-to-help-your-child-ace-the-first-week-of-school>



Find out more activities from the **P1 Parent-Child Role Playing Activity Kit**

Nurturing Values and Positive Attitudes

Values guide our words and actions, and develop character strengths and dispositions. You can encourage your child to:



Reflect on how to show care and concern, and respect for their friends and family members



Ask questions about their experiences in school, at home and of the world around them



Reflect on learning experiences and try ways to do something better

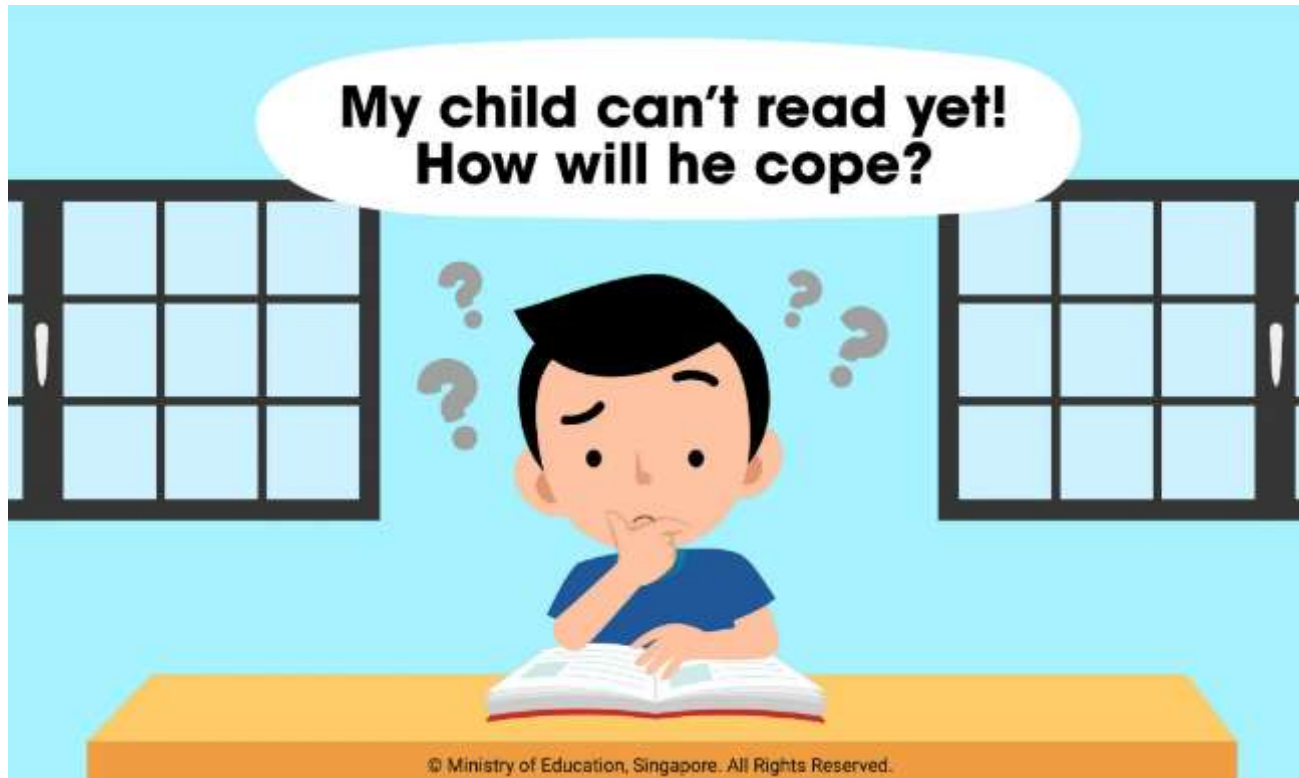


Persevere even when faced with challenges and use these experiences as a teachable moment to share the importance of building resilience in life



To Ser

Interest Your Child in Reading



You can encourage your child for efforts in learning to read. Most importantly, reading should be a fun learning process.

Reading is a habit that we can build.

Interest your child in reading

- It is never too late to start getting your child interested in books
- Take your child to the library, expose them to various picture books and read together for a start
- Students will be introduced to various genres of books, and be taught how to blend letter sounds through games or craft work

Support Your Child In Time Management

My child takes so long to complete her work. Will she fall behind?



Children pick up time management at a different pace and can improve with help.

Support your child in time management

- Parents can model this with your child at home with small tasks and everyday activities
- If you find your child struggling with completing their tasks or homework within a given time, it could also mean that they are not sure how to go about completing them. Try breaking the task down into smaller steps
- If you notice any learning issues, do reach out to the school early

Be specific about how much time they should spend on the work, and offer a set time that they should complete the work.

To Serve To Lead



Teach Your Child to Ask for Help



Asking for help may not seem obvious to a child.

Teach your child how to ask for help:

Step 1: Look for someone who can help

Step 2: Check if that person has the time to help; if not, look for another suitable person

Step 3: Share what the problem is and how they feel

Step 4: Listen carefully to the advice given

Step 5: Thank the person for the help

Practise with your child when and how to ask for help. Remember to affirm them for their efforts.

Encourage Your Child to Eat During Recess



Remind your child that eating during recess is important as it helps them with the physical energy to continue focusing and learning in class.

Students may enjoy recess so much that they forget to eat. Some students may not be eating because they are shy about ordering food.

Encourage your child to eat during recess

- Let your child practise ordering food and making payment when out with the family
- If they need more time to build their confidence or observe how it is done by other students, you may pack a lunch box in the meantime, so they will always have something to eat
- If you worry that your child is not eating at all, discuss with your child's teacher

To Serve To Lead



How else can you support your child?

Support

your child and encourage them to overcome challenges with your care

Affirm

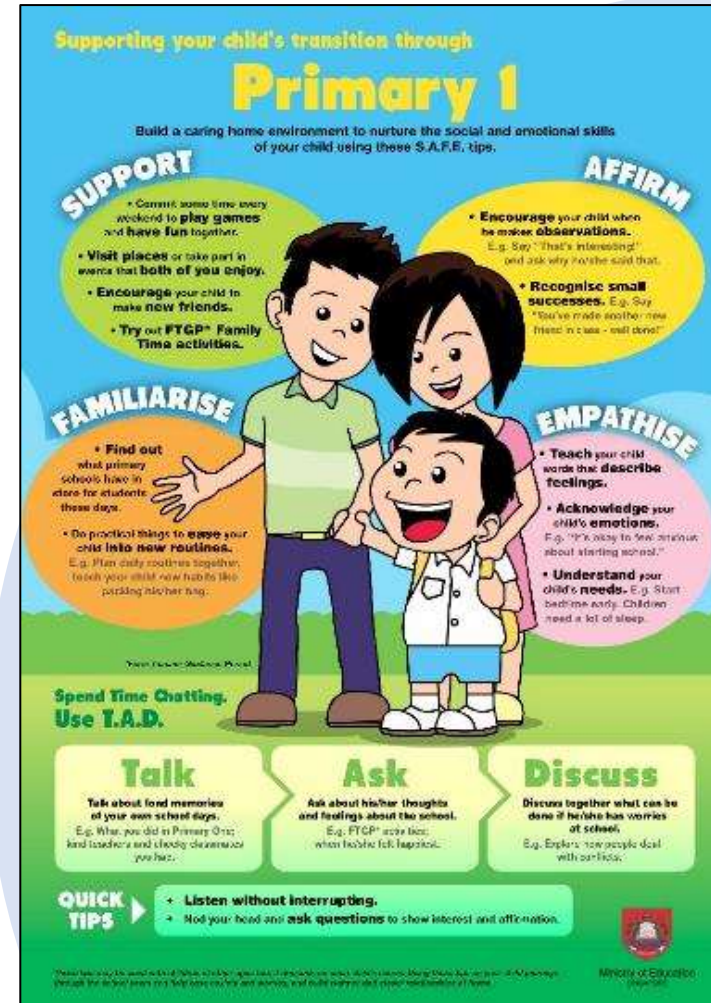
your child by recognising small successes and praising their efforts

Familiarise

your child with new routines gradually and share your experiences in primary school

Empathise

with and acknowledge your child's feelings



Starter Tips

Help your child to understand and verbalise:

- Names of form teachers and class
- Names and contact numbers of parents and/or caregivers (handbook)
- Mother Tongue Language he/she is taking
- School routines such as morning assembly, recess and dismissal
- Going-home arrangement



Start of School Matters



To Serve To Lead



Key Matters

1. Daily Packing List
2. School Attire
3. Reporting Details
4. School Safety and Routines
5. Administrative Matters



What's In Your School Bag?

Help your child develop the good habit of packing their bag before school. Chat about what goes in each day and how to check that they have everything they need. When they are ready, let your child try packing their bag on their own.

Here are some questions you can ask:

What should you bring to school every day?

- ☐ My pencil case
- ☐ School Diary
- ☐ _____
- ☐ _____

Which books should you bring?

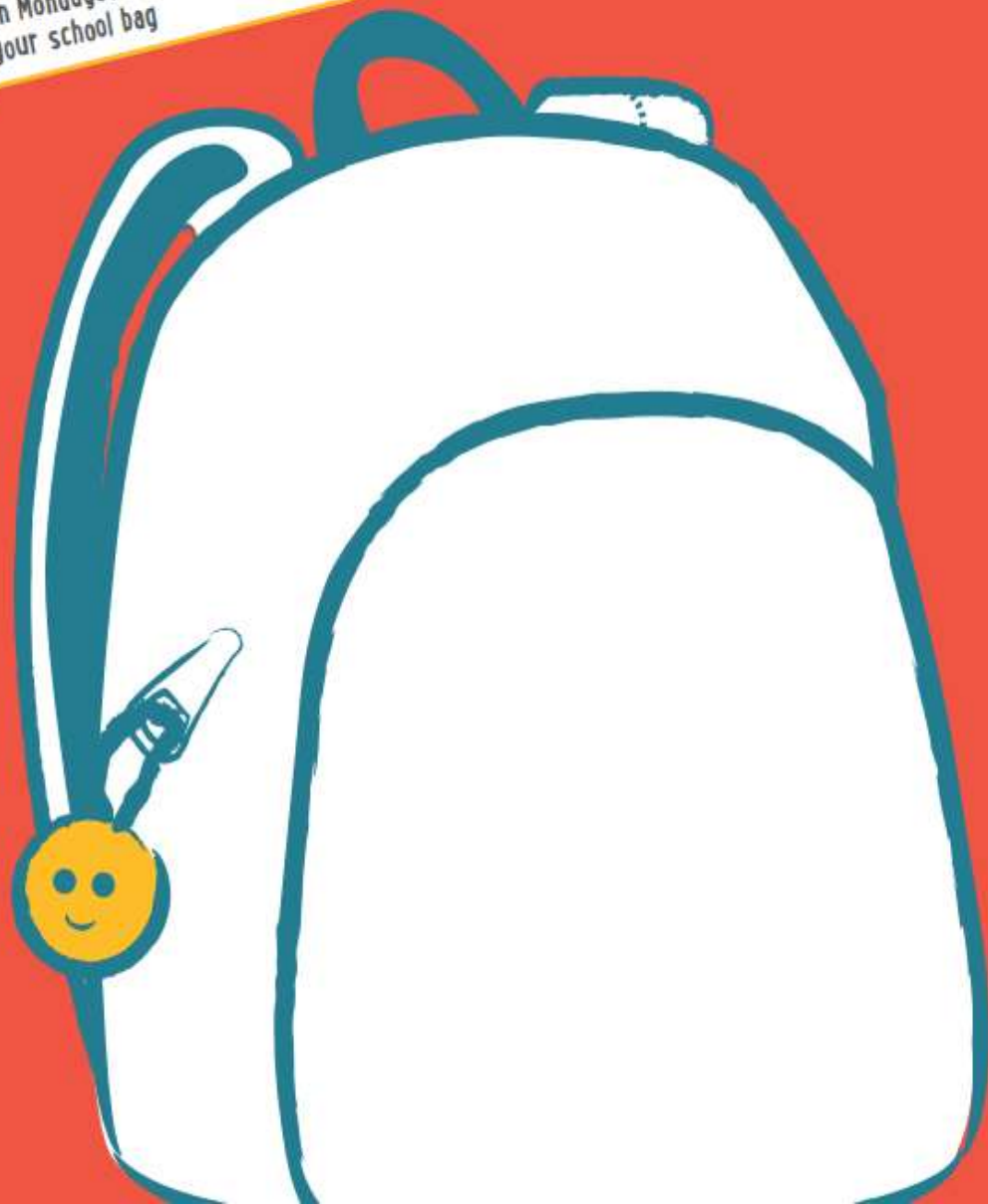
- ☐ Have you checked your timetable?

Anything else?

- ☐ Have you checked your School Diary?
- ☐ Have you packed your homework?
- ☐ Did your teacher give you any forms for me to read or sign?



What should you bring to school on Mondays? Draw the items in your school bag



Daily Packing List

1. Pencil case with pencil, ruler and eraser
2. A box of coloured pencils
3. A storybook
4. A water bottle
5. Healthy and dry food for snack breaks in class (*e.g. biscuits*)
6. Money for recess
7. Student Handbook
8. Nametag with lanyard
9. Pack books as indicated in the handout for first three days, thereafter, follow the time-table.



Things to Bring for First Week of School

| Friday 2 January 2026 | Monday 5 January 2026 | Tuesday 6 January 2026 |
|---|---|--|
| <p><u>Mathematics</u></p> <ul style="list-style-type: none"> Primary Mathematics Practice Book 1A/1B (New) PCPS Worksheet File with 10-part dividers & 10 sheet protectors – Mathematics (Blue) Mini-whiteboard with white board marker and white board eraser <p><u>Physical Education</u></p> <ul style="list-style-type: none"> An Active and Healthy Me - Student Journal Primary 1 (Rev Ed) <p><u>Art</u></p> <ul style="list-style-type: none"> A4 Drawing Papers PCPS My Art Portfolio (20-pocket) <p><u>Music</u></p> <ul style="list-style-type: none"> PCPS Music File (20-pocket) | <p><u>English</u></p> <ul style="list-style-type: none"> P1 Sounds Booklet 1 and 2 PCPS A5 Single Lined Exercise Book (English Spelling) PCPS Worksheet File with 10-part dividers & 10 sheet protectors – English (Lilac) <p><u>Social Studies</u></p> <ul style="list-style-type: none"> Social Studies Activity Book 1 | <p><u>Mother Tongue</u></p> <p><i>*A circular with specific instructions will be given to the students on second day of school in 2026.</i></p> <p><i>Please refer to the handout to assist your child in the preparation of books for collection.</i></p> <p><u>FTGP</u></p> <ul style="list-style-type: none"> My Form Teacher Guidance Period (FTGP) Journal P1 (New Syallbus) |

Safety Considerations For Packing

- Use safe school bag
- Consider school bag with light materials
- Leave parents' contact details
- Pack safe stationery
- Label all stationery and materials



4 As

Attire, Appearance, Attendance, Attitude



Attire

Clean uniform

Tucked-in shirts

**Clean white socks and
black shoes**

Appropriate ear studs

**Appropriate and
acceptable hair accessories**



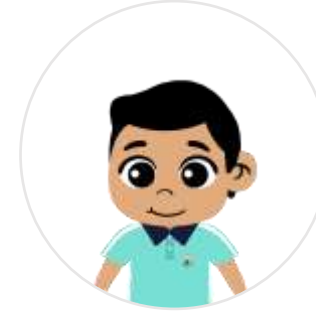
Appearance

**Appropriate and
acceptable hair length
and hairstyles**

**Trimmed and short
fingernails**

Neat look

Tidy image



Attendance

Eat well

Be physically active

Rest well

Attend school everyday

Attend school on time



Attitude

Curious

Open-Minded

Responsible

Reflective

Resilient

School Uniform

| | |
|----------------|---|
| School Uniform | <ul style="list-style-type: none">Students are to wear the prescribed school uniform and modification to the uniform is not allowed. |
| School Top | <ul style="list-style-type: none">Clean School Polo T-shirt is to be always tucked in.Girls are not to wear bright-coloured undergarments under their school uniform. |
| Nametag | <ul style="list-style-type: none">Name tag must be ironed on/sewn above the school badge. |
| School Bottom | <ul style="list-style-type: none">Boys are to wear bermudas that should be no longer than 1-inch above the knees.Girls are to wear skirts no longer than 1-inch above the knees. |
| Socks | <ul style="list-style-type: none">Only plain white socks are allowed, and they should be worn at least 2 inches above the ankles. |
| Shoes | <ul style="list-style-type: none">Only plain black canvas/sports shoes are allowed. There should be no fanciful/reflective/coloured stripes on any part of the shoes. |
| PE Attire | <ul style="list-style-type: none">Students can put on their school PE shorts <u>only</u> on days with PE/PAL lessons. At other times, students are expected to wear their formal school attire (Skirts/Bermudas). |

School Uniform (Girls)

Uniform



PE Attire



School Uniform (Boys)

Uniform



PE Attire



Hair

Boys:

- short and tidy
- should not have hair touching the collar, ears, or eyebrows
- side and back must be sloped.

Girls:

- long fringe kept off their faces with dark blue/black pins or hair bands.
- must be tied up neatly with plain blue/black rubber bands or clips.



Nametags

Name tag must be ironed on/sewn above the school badge.



Earrings

- A pair of matching plain ear-studs (less than 5mm in diameter) on the ear lobes.
- **Black, transparent, silver, no gold.**
- NO dangling or multiple earrings are allowed.



Reporting to School

- 1st Day Reporting Date : **2 January 2026 (Friday)**
- School Hours : **7.30 a.m. – 1.20 p.m. daily**
- Reporting time : **7.30 a.m.**
- Assemble Point : **Hall**



Attendance

- Students must always attend school **during school days**.
- **Parents are required to update school on their child's absence before 9am.**
- Students' absences not accounted and for invalid reasons will be noted in the attendance system as 'Non-Valid Reason'.
- For irregular attendance, students will be referred to the
 - Year Head
 - Student Welfare Officers
 - MOE Compulsory Education Unit



Absence from School

- Medical Certificate or a letter from parent/guardian is needed to explain child's absence. (Limit of 5 letters per semester)
- Upload Medical Certificate or letter to PG.

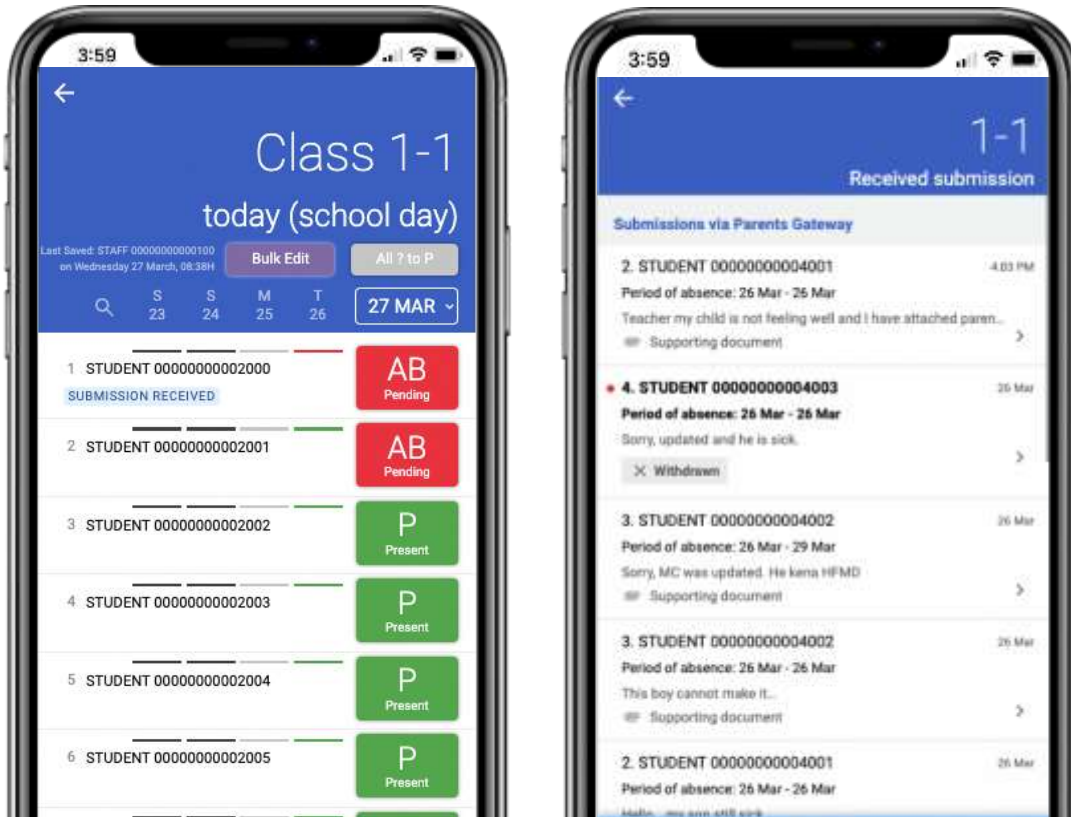


PG-SCM Student Absence Notification allows parent submissions via PG

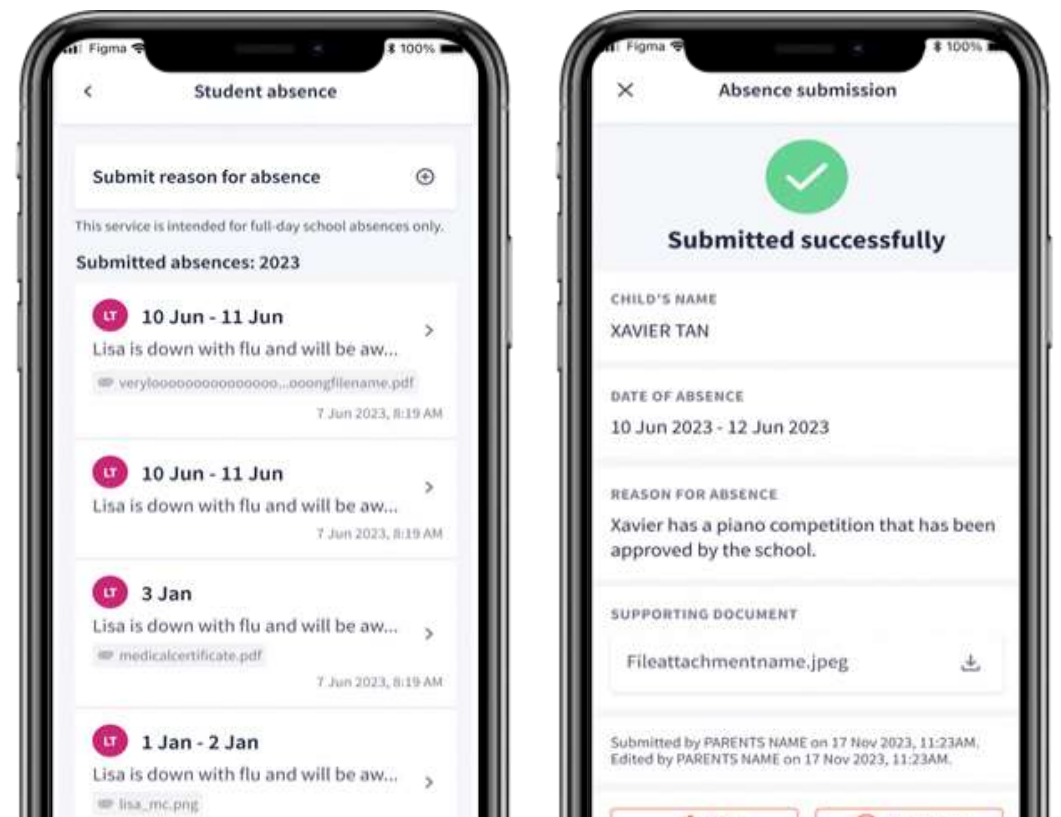
With the new enhancements:

- Notifications can be set up and scheduled on SC Mobile to automatically notify parents via PG when their child is absent.
- This notification will also request parents to submit the child's reason for absence and relevant documents via PG.

Teacher SCM App



Parent PG App



Objectives of using PG-SCM Absence Notification

- **Enable parents to submit reasons for their child's absence directly through the PG application**
- **Streamline our student absence notification system**

The enhancement includes:

- **Automated notifications**

-When a child is absent, parents will receive a notification via Parents Gateway (PG) requesting them to submit the reason for absence and attach relevant documents.

- **Convenient submission**

- Parents can submit absence reasons directly through the PG app, either in response to a notification or by self-initiating the submission.

Punctuality

- Seek the cooperation of all parents to help us to instil in our students the value of **punctuality**.
- Students should try to be in school **by 7.20am**.
- Lessons start at 7.30a.m. sharp after flag raising.
- **Punctuality helps students with:**
 - Mindful Start
 - Calm Bodies
 - School Readiness
 - Interaction with form teachers
 - Positive Well-Being
 - Builds Confidence & Discipline



Latecoming

- Students must be **punctual for school daily.**
- Students who are **not in class or hall by 7.30a.m. will be considered late.**
- For persistent latecomers, students will be:
 - Issued latecoming letters.
 - Referred to the Year Head and HOD Discipline/Student Management for further actions.
 - Parents will be engaged by the school.



Punggol Cove Primary School

School Virtual Tour Video



To Serve To Lead





SEKOLAH RENDAH PUNGGOL COVE

灣景小學

பொங்கோல் கோவ் தொடக்கப்பள்ளி

PUNGGOL COVE PRIMARY SCHOOL

WELCOME TO PUNGGOL COVE PRIMARY SCHOOL

School Routines & Safety



To Serve To Lead



Morning Assembly

- Assemble in the classrooms or school hall by 7.20am.
- Teachers on duty will guide the students to the classrooms or hall.
- Form Teachers will mark students' attendance.
- Flag-Raising will start promptly at 7.30 a.m.
 - Singing of the National Anthem
 - Pledge Taking
- Morning Greeting



Recess

Form teachers and staff on duty will:

- bring the students down to the canteen at **9.00 a.m.**
- assist students to buy food, drinks, manage their food, drinks and be readily available to assist the students.
- accompany our Primary 1 students throughout the recess.



After Recess

Form teachers or staff on duty will:

- ensure students have finished eating, clean their eating space and wash their hands.
- accompany the students back to their classroom at 9.30 a.m. to continue with their lessons/activities.



Snack Break

- Pack healthy and bite-sized snacks.
- Snack time will be at 12.00pm daily in the classroom for 10 minutes.
- Share with students about 'snack time' and try it at home.



Arrival at School

- There are three entry points into the school: -
 - **Gate B** (Side Gate)
 - **Gate E** (Back Gate nearest to Nibong LRT)
 - **Vehicular Drop-off at the Foyer outside General Office**

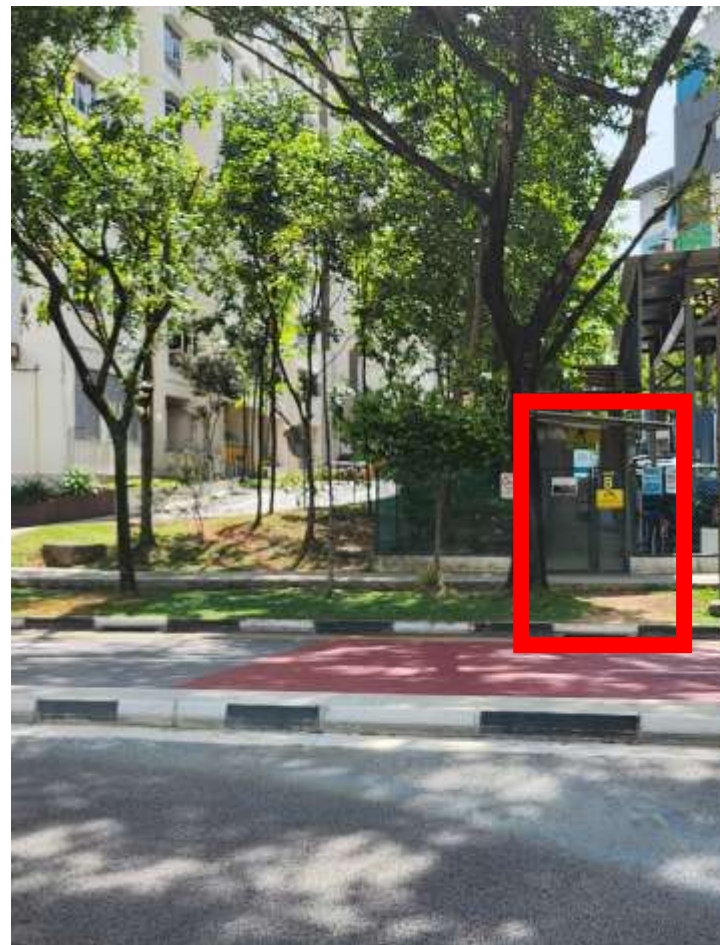


Arrival at Gate B (Side Gate)

After Day 1,

- Parents will drop their child off at **Entrance of Gate B.**
- Parents will not be allowed to enter beyond Gate B.
- Students will walk along the walkway and into the school.
- Teachers will be stationed along the pathway to assist the students.





Arrival at Gate B (Side Gate)



To Serve To Lead



Arrival at Gate B (Side Gate)



Arrival at Gate E (LRT)

After Day 1,

- Parents will drop their child off **at Entrance of Gate E (LRT)**.
- Parents will not be allowed to enter beyond Gate E (LRT).
- Students will walk along the walkway and into the school.
- Teachers will be stationed along the walkway to assist the students.
- Parents are advised not to congregate around the gate and block entry.





LRT



Walkway from LRT



Gate E



Arrival at Gate E (nearest LRT)



To Serve To Lead



Arrival at Gate E (LRT)



Arrival outside General Office (Vehicle Drop-off)



- Ensure that the students get off on the left side of the vehicle safely.
- Drive safely and adhere to the **speed limit of 10km/h.**
- Refrain from getting out of your car so that it will not cause a congestion at the drop-off point.



Dismissal

- Primary 1 Dismissal is at 1.20 p.m.
- There are 5 dismissal arrangements: -
 - **Gate B**
 - **Gate E**
 - **Vehicular Drop-off at Foyer outside General Office**
 - **School Bus**
 - **Student Care Centre**
- There will be designated entrance and waiting areas, and floor markings for adults waiting for their children during dismissal.



Pick up by Parents at Gate B

- Last period teacher will bring the Primary 1 students down to Level 1 and release them to walk to the Parents Waiting Area leading to Gate B.
- Teachers will be stationed at the Parents Waiting Area to ensure students are handed over to the parents/care-givers.



School Safety

Parents Waiting Area at Gate B



Pick up by Parents at Gate E

- Parents will stand on the markers pasted on the floor of the COVE which is demarcated by levels.
- Last period teacher will bring the Primary 1 students down to the Cove and hand them over to their parents/caregivers.



School Safety

Parents Waiting Area for Gate E At Cove

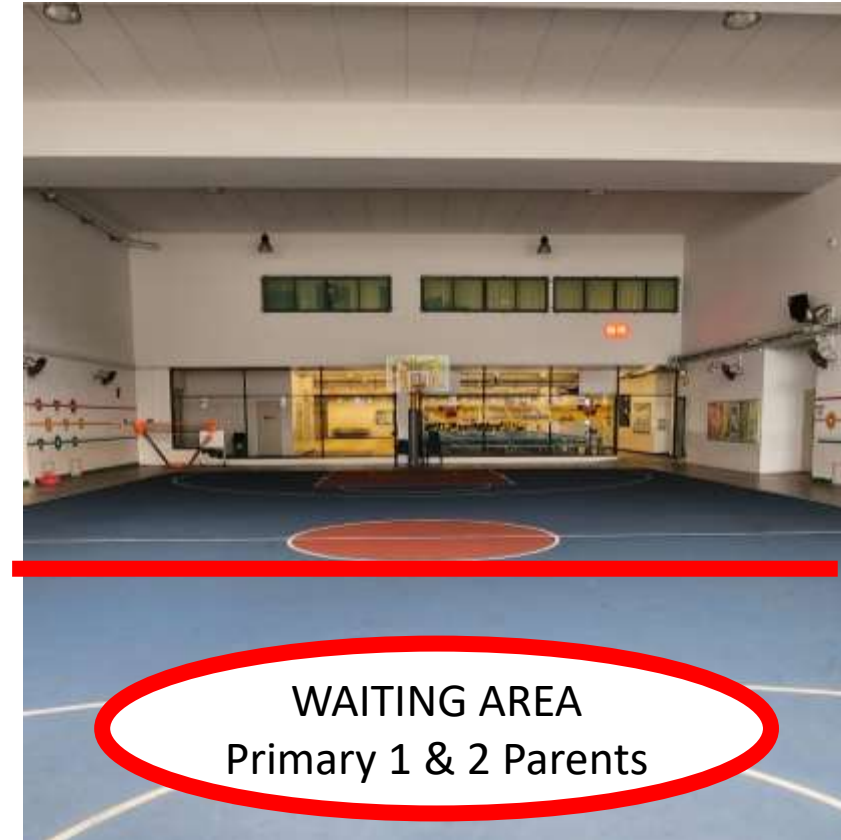


To Serve To Lead



School Safety

Parents Waiting Area for Gate E At Cove



To Serve To Lead



Vehicular Pick-Up Foyer

- Last period teacher will bring the Primary 1 students down to Level 1 and release them to walk along the school corridors towards the General Office.
- Teachers will be stationed outside the General Office to ensure that the students wait safely for their parents to pick them up.
- Vehicles may enter the school premises **only from 1.45 p.m. onwards**).



School Bus Dismissal

- Form Teachers will accompany students to the hall and ensure proper hand over to the school bus drivers.
- Bus drivers will be stationed at the hall to assemble the students before bringing them down to board the school bus.
- Staff I/C will ensure that the students are belted up before the school bus can leave the school.



School-Based Student Care Centre

- Primary 1 students who are in Student Care, will wait in the classroom after dismissal.
- Student Care Teachers will take over the students immediately after dismissal.
- If students are not attending Student Care for the day, our teachers will still handover to student care to ensure all children are accounted for.
- Parents to liaise with Student Care for any early dismissal.



School Safety- Arrival and Dismissal

- For the safety of our students and staff, parents **will not be allowed** to enter the school premises (e.g. Canteen) when dropping off or picking up your child from the school every morning and during dismissal. Parents will also not be able to pass through The Cove and Canteen to get to the LRT Station and vice versa.
- **Parents and guardians to remind your child/ward on the importance of road safety.** For example: Make use of the traffic light when crossing the road; look out for heavy vehicles before they cross the road.



Administrative Matters




To Serve To Lead



Lanyards

- Lanyard with nametag has to be worn by the students on the first month of school to provide identification and the details of going-home arrangement.
- Indicate on the lanyard tag on the going-home arrangement.

| | |
|---|---|
|  | STUDENT'S NAME 1 EMERALD |
| E | [] SCHOOL BUS (NO.) |
| | [] STUDENT CARE CENTRE |
| | [] SIDE GATE B (PARENTS WAITING AREA) |
| | [] LRT GATE E (PARENTS WAITING AREA) |
| | [] IN FRONT OF GENERAL OFFICE (VEHICLE PICK-UP POINT) |



Communication Channels for Parents

1. Student Handbook
2. Parents Gateway
3. Termly Letter to Parents (Start of each term)
4. Meet-the-Parents Session (Twice a year)
5. Curriculum Briefings



Communication with Teachers

- Have regular conversations with our teachers in both academic and non-academic areas – this will help you better guide your child's holistic development.
- Ask the teachers for the best way and time to contact them.
- Call the General Office to leave a message for the teacher to call back to make an appointment to meet the teachers.



Purchase of School Books

- Our current school bookshop vendor is BL Marketing Pte Ltd. Parents are encouraged to make their purchases via their **online store** (www.blmarketing.sg) **from 16 November 2025**. Home delivery service is available at a fee of \$12.50 per trip. Payment is via Credit Card, Debit Card and PayNow. Please refer to the P1 Booklist that has been given to you for instructions on the online order and collection.
- P1 parents may also purchase the books from the school bookshop through the **walk-in sales on 27 November 2025 and 28 November 2025 at CCA Room 2 (PCPS Cove)**. The operating hours will be from 9.00am – 3.00pm. Please note that there may be a long queue with longer waiting time expected. Payment is via Cash and PayNow.



Purchase of School Uniform

- Our current school uniform vendor is Shanghai School Uniforms Pte Ltd. Parents are encouraged to purchase the uniforms via their **online store (www.shanghai-uniforms.com) before 15 December 2025** to ensure that new uniforms are received before school reopens. Home delivery services will be processed with a delivery fee of S\$10.00 per trip (for orders below 10kg). **Alternatively, parents may make appointment and self-collect at the retail shop: 63 Ubi Avenue 1, #04-09 (63@Ubi) Singapore 408937.** Detailed sizing guides, care guides and exchange policies etc. are provided on their online store. The payment method for online purchase is PayNow only.
- P1 parents may also purchase the uniform through the **walk-in sales on 27 November 2025 and 28 November 2025 at CCA Room 1 (PCPS Cove).** The operating hours will be from 9.00am – 3.00pm. Please note that there may be a long queue with longer waiting time expected. Payment is via Cash and PayNow. You are encouraged to bring your own reusable bags for the purchase of uniforms. Should a bag be needed, a charge of \$0.10 per bag applies.



Purchase of School Uniform

Recommended for Primary 1 students:

- 4 polo white shirts
- 2 bermudas/skirts
- 2 PE shorts
- 3 pairs of white socks
- 1 pair of black shoes a
- A set of 5 nametags (order of nametags is under bookshop's P1 Booklist).



Financial Assistance

MOE Financial Assistance Scheme (FAS) :

- School Textbooks
- School Attire
- School Meal Subsidy
- Transport

For enquiries, please contact our school office, at Tel: 63857339.



To Serve To Lead



Basic Insurance Coverage

- All students are covered with group personal insurance for accidents that happen in school or when the student is on the way to school or home.
- Parents and guardians are encouraged to continue with their existing insurance coverage for their child/ward.



Dental Update

Dental Screening Programme: We conduct dental screenings for Primary 1, 3, and 5 students.

Treatment Scope: Our service provides limited, simple treatments within the school setting. For more complex cases, we will refer students to appropriate dental centre or institutions for advanced care.

Consent: Consent is required prior to the dental screening and treatment. Parents of Primary 1 students will receive a notice to give consent and provide medical information for their children online.

Clinic Operations: Due to resource limitations, our school dental clinics do not operate daily. Students requiring treatment may need to attend appointments at a designated buddy clinic to ensure continuity of care.



<https://go.gov.sg/schdentalservices>



To Serve To Lead



POSB Smart Buddy

- Launch of POSB Smart Buddy Programme to the whole school student population in September 2025.
- Enables cashless payment for students
- Allows parents and guardians to remotely manage child's daily spending and cultivate saving habits in a digital and interactive way via the Smart Buddy mobile app.



Notes to Parents

- Presentation slides will be uploaded onto the school website.
- FAQs and information on the start of school term will be sent via Parent Gateway before start of school.



Parent Support Group Sharing Student Care Briefing Booth Visits



To Serve To Lead



Thank You



To Serve To Lead

